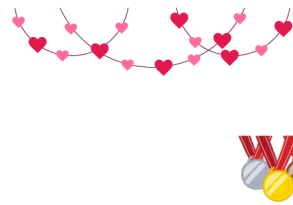


FEBRUARY 2026



Charlotte Elementary Breakfast Menu

MON

TUES

WED

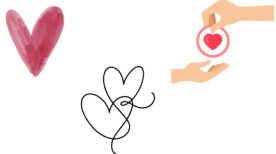
THURS

FRI



Must have cash on hand or funds on account to purchase any extras - no exceptions.

SNOW DAYS In case of school cancellation, we will serve the menu from the first snow day on the day we return to school



CHECK OUT HEALTH-E-PRO FOR ONLINE MENUS WITH NUTRIENT INFORMATION AND MORE @ **CHARLOTTE PUBLIC SCHOOLS FOOD & NUTRITION SERVICES**

Feb. 2
Blueberry Nutri-Grain Bar
String Cheese
Fruit of the day
Milk and Juice

Feb. 3
Cinnamon Toast Crunch Muffin
Yogurt
Fruit of the day
Milk and Juice

Feb. 4
Chocolate Glazed Mini Donut Holes
String Cheese
Fruit of the day
Milk and Juice
Early Release Day

Feb. 5
Cocoa Puffs Cereal Kit
Fruit of the day
Milk

Feb. 6
Chocolate Filled Crescent Roll
Fruit of the day
Milk and Juice
Olympic Opening

Feb. 9
Cherry Cocoa Soft Baked Bar
String Cheese
Fruit of the day
Milk and Juice

Feb. 10
Blueberry Muffin
Yogurt
Fruit of the day
Milk and Juice

Feb. 11
Mini Blueberry Donut Holes
String Cheese
Fruit of the day
Milk & Juice

Feb. 12
Lucky Charms Cereal Kit
Fruit of the day
Milk

Feb. 13
No School for Students or Staff
Mid-Winter Break

Feb. 16
No School for Students or Staff
Mid-Winter Break

Feb. 17
Apple Cinnamon Nutri-Grain Bar
Yogurt
Fruit of the day
Milk and Juice
World Acts of Kindness Day

Feb. 18
Chocolate Muffin
String Cheese
Fruit of the day
Milk and Juice

Feb. 19
Trix Cereal Kit
Fruit of the day
Milk

Feb. 20
Cinnamon Ultimate Breakfast Round
Yogurt
Fruit of the day
Milk and Juice

Feb. 23
Banana Mini Loaf
String Cheese
Fruit of the day
Milk and Juice

Feb. 24
Cherry Cocoa Soft Baked Bar
Yogurt
Fruit of the day
Milk and Juice

Feb. 25
Mini Powdered Donut Holes
String Cheese
Fruit of the day
Milk and Juice

Feb. 26
Cinnamon Pop Tart Breakfast Kit
Fruit of the day
Milk

Feb. 27
Strawberry Cream Cheese Mini Bagels
Yogurt
Fruit of the day
Milk and Juice

Vegetable of the Month:
Cauliflower



Fruit of the month: Banana



Follow us on Facebook @ **Charlotte Public Schools: Food & Nutrition Services**



This institution is an equal opportunity employer
Menu subject to change. A variety of milk is available each day

